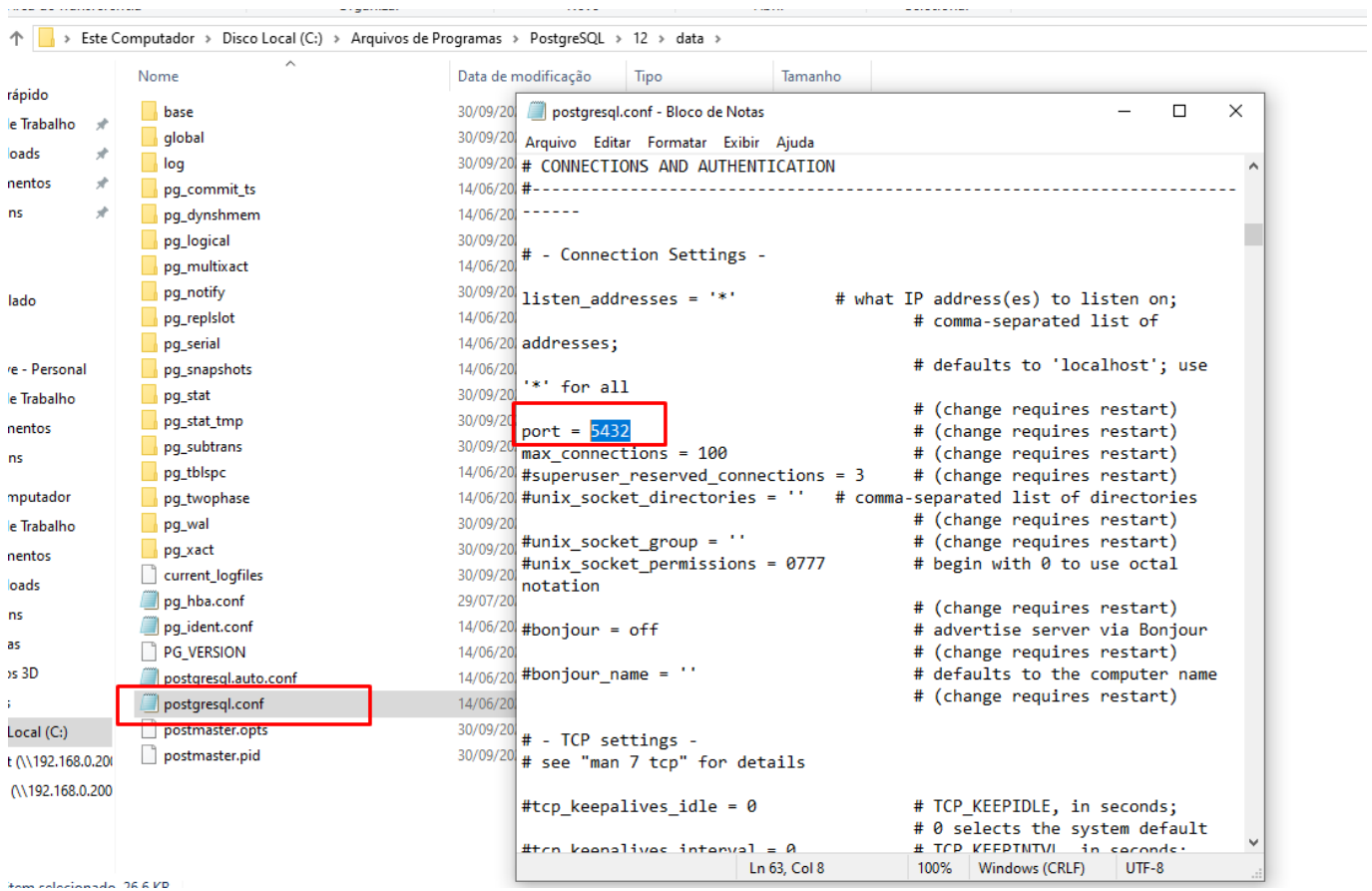


PSQL - Trocar porta do PostgreSQL

Trocar porta do postgresQL

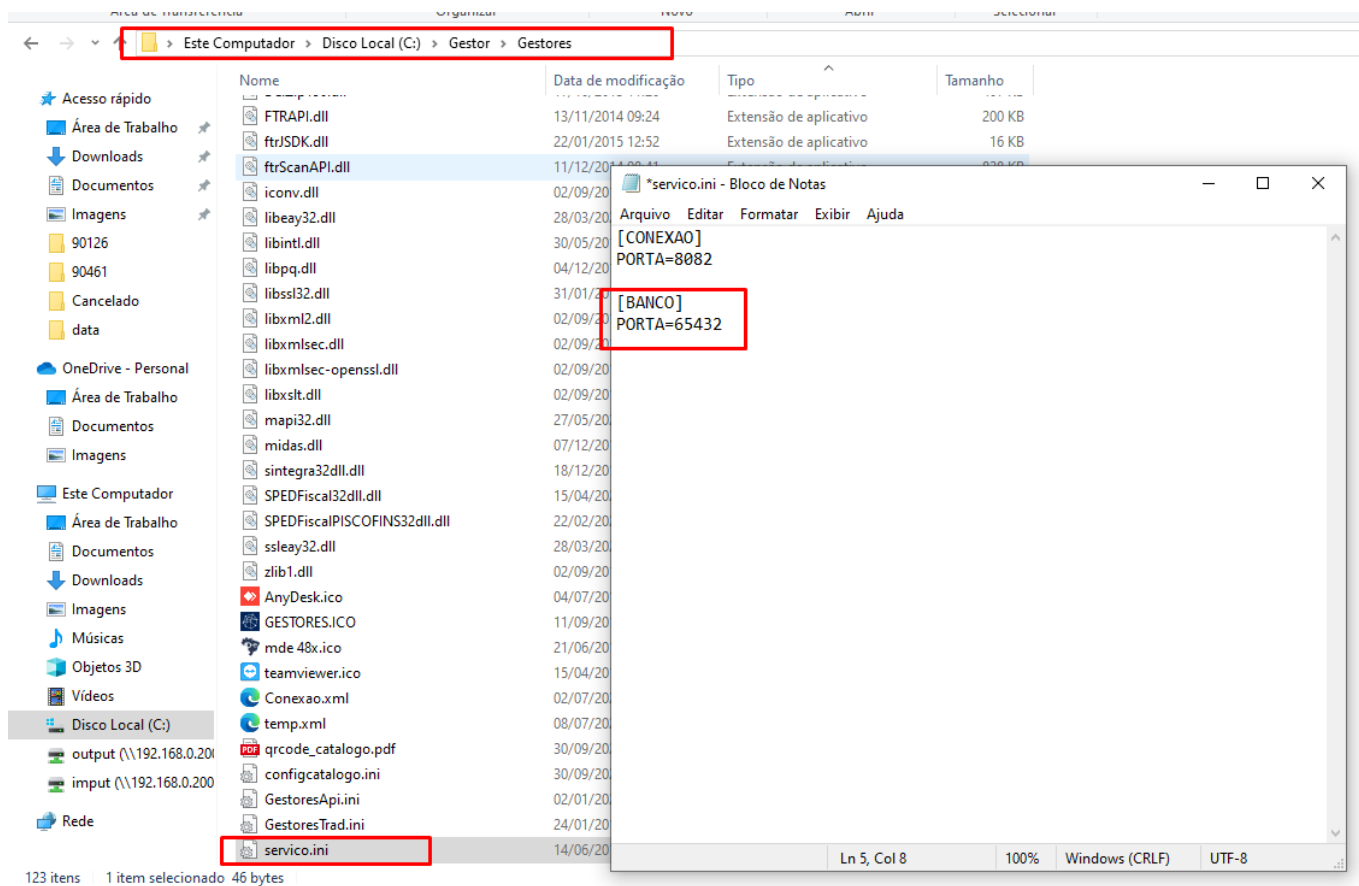
1. Trocar na pasta do PosgreSQL (C:\Arquivos de Programas\postgresql\12\data)

Arquivo postgresql.conf, trocar o campo port =

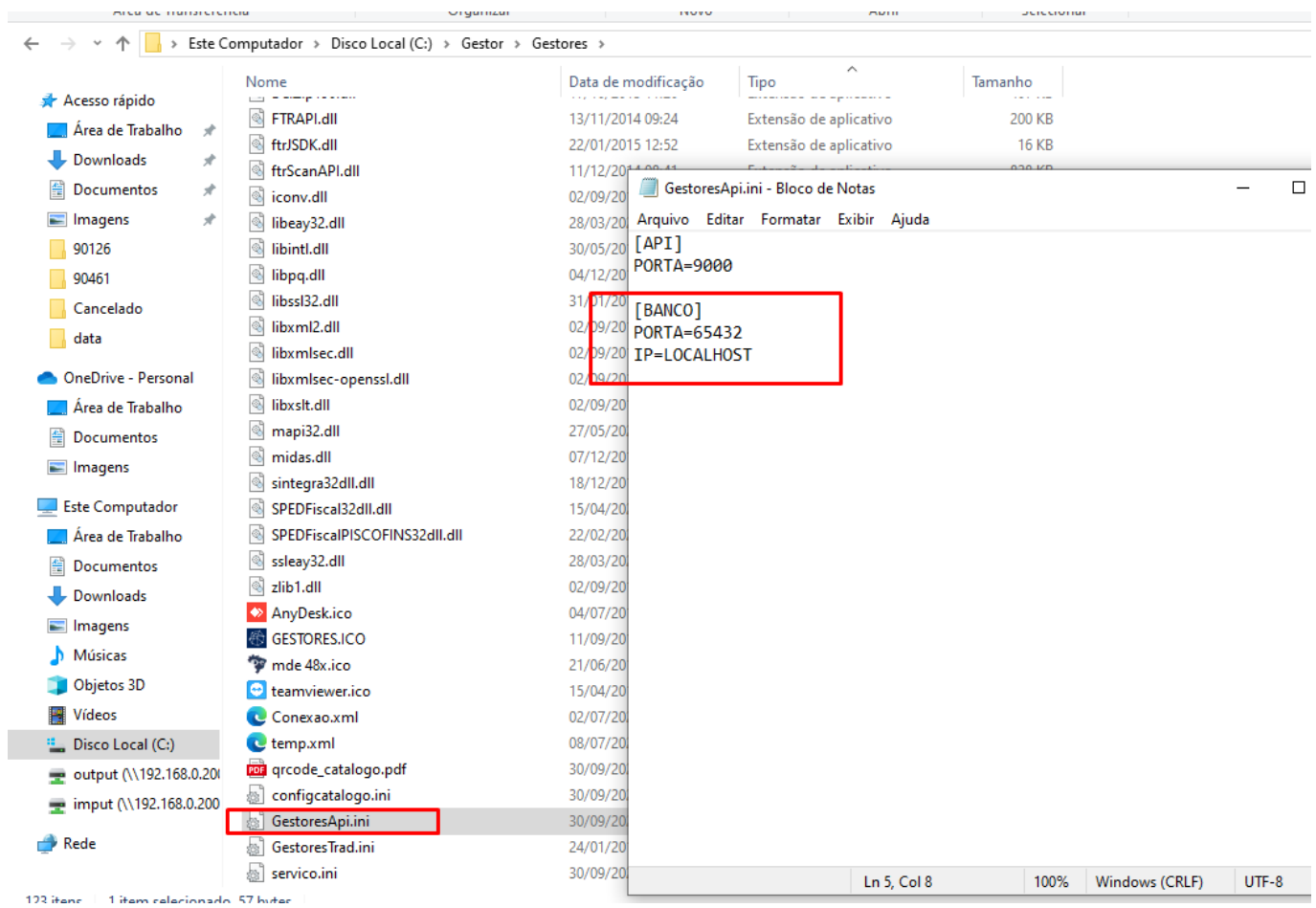


2. Trocar a porta do [BANCO] PORTA =

C:\Gestor\Gestores\serviços.ini

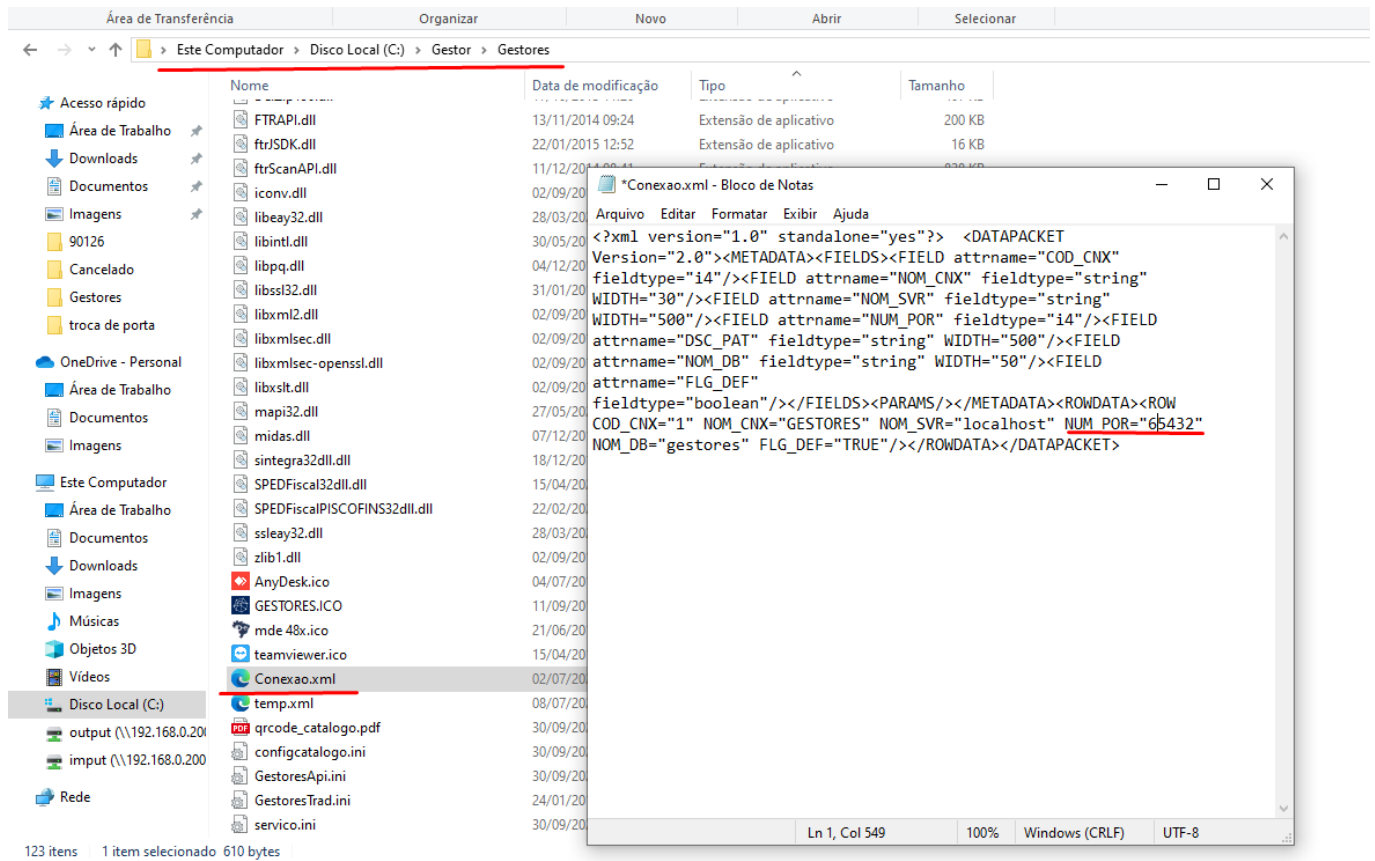


3. Trocar a porta do [BANCO] PORTA =
C:\Gestor\Gestores\gestoresApi.ini



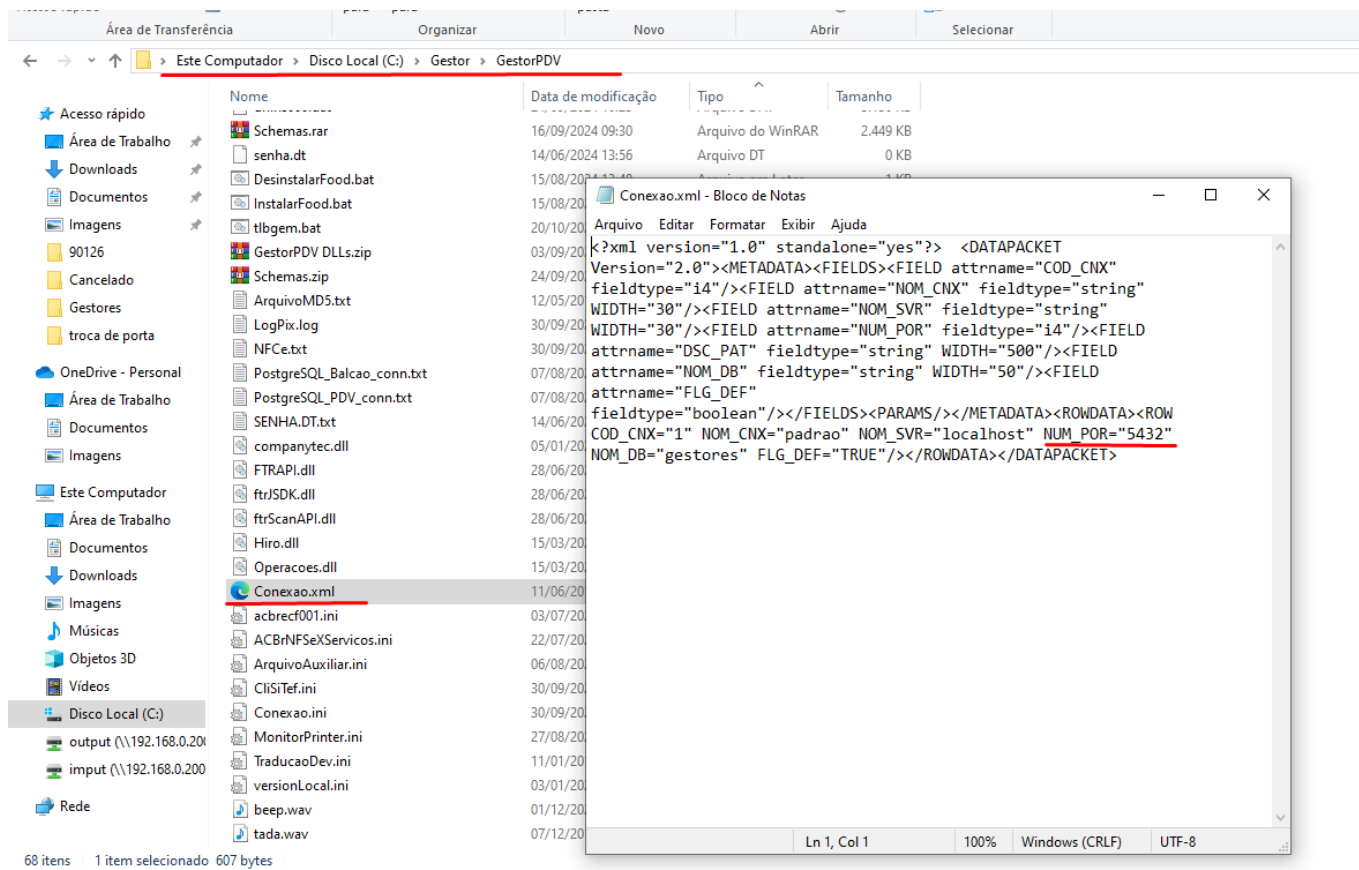
4. Trocar a porta [NUM] POR = " "

C:\Gestor\Gestores\conexao.xml



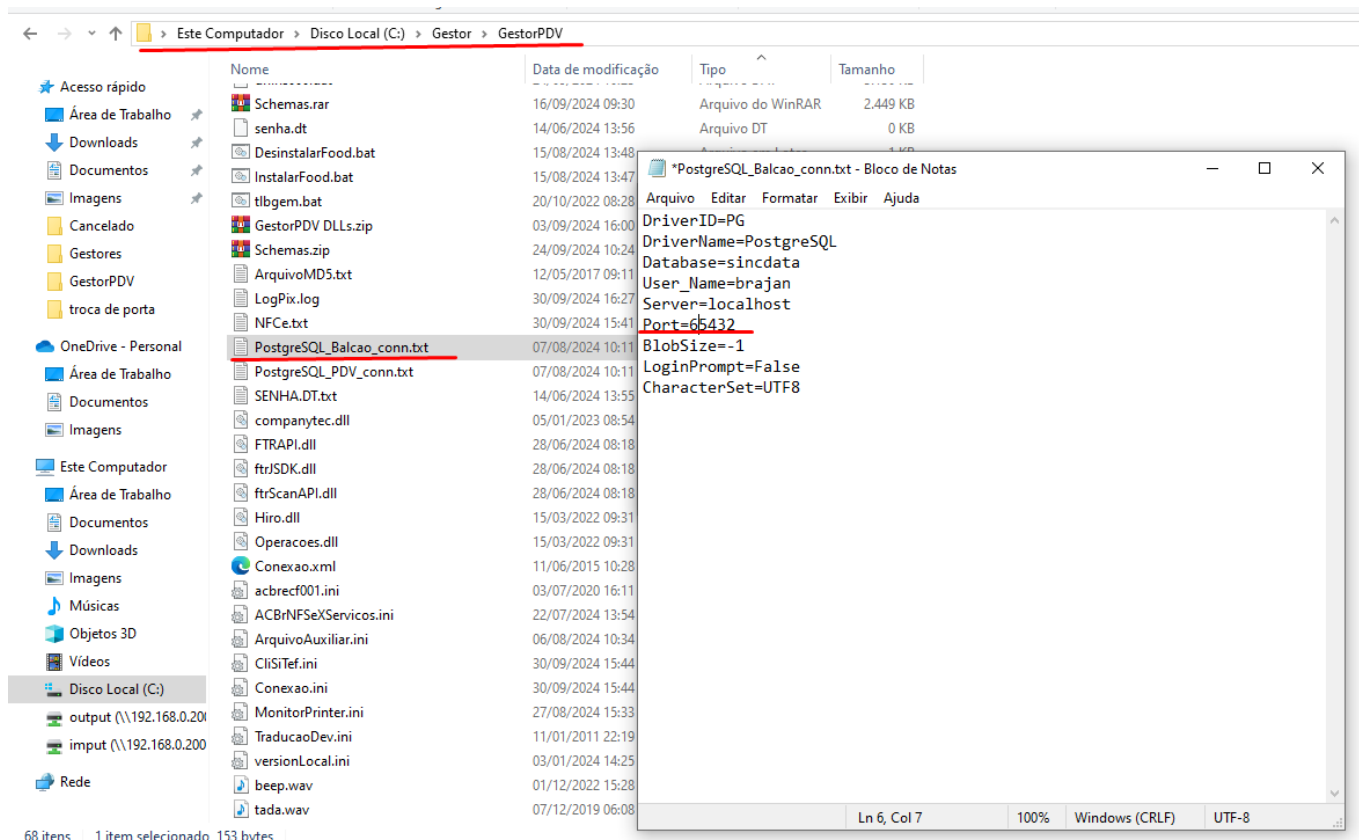
5. GestorPDV

C:\Gestor\GestorPDV\conexao.xml



6.GestorPDV

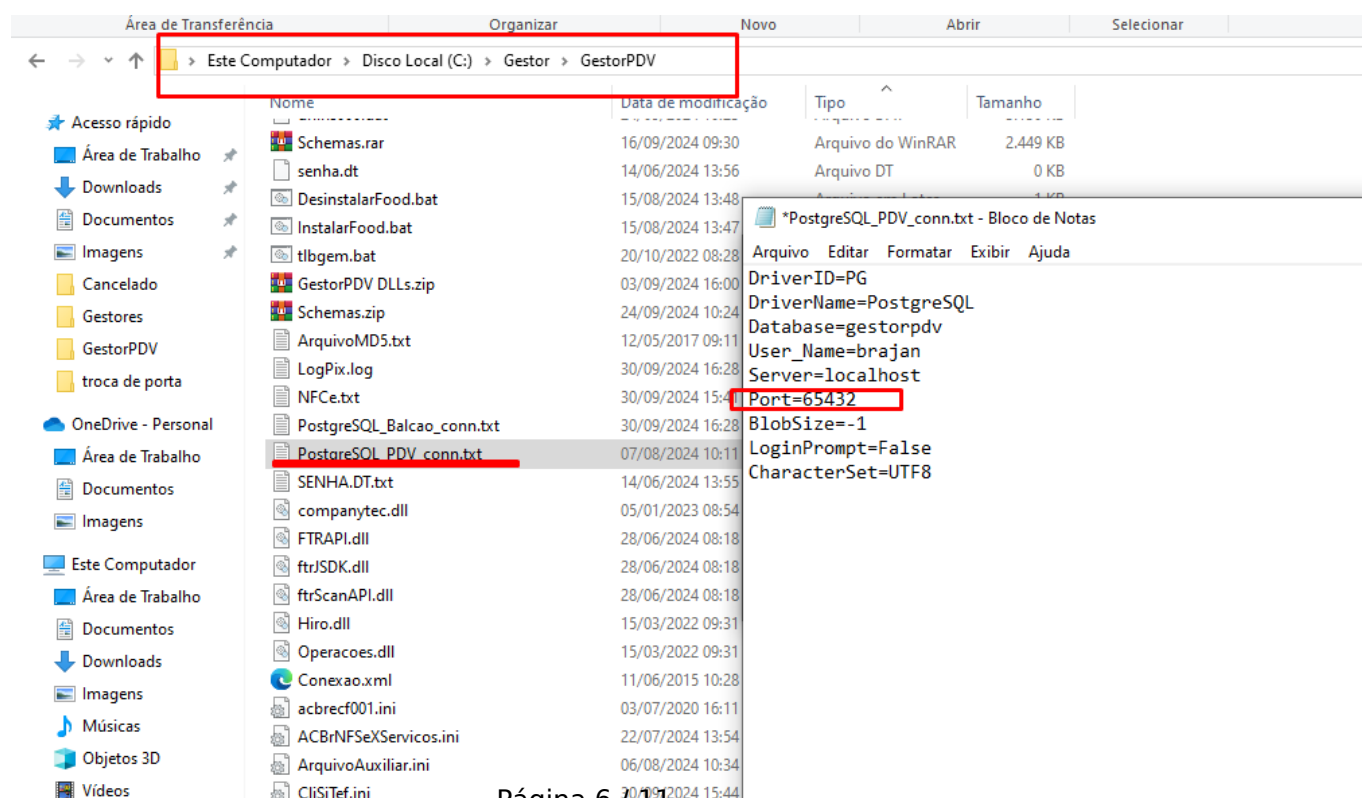
C:\Gestor\GestorPDV\PostgreSQL_Balcao_conn.txt



PostgreSQL_PDV_conn.txt

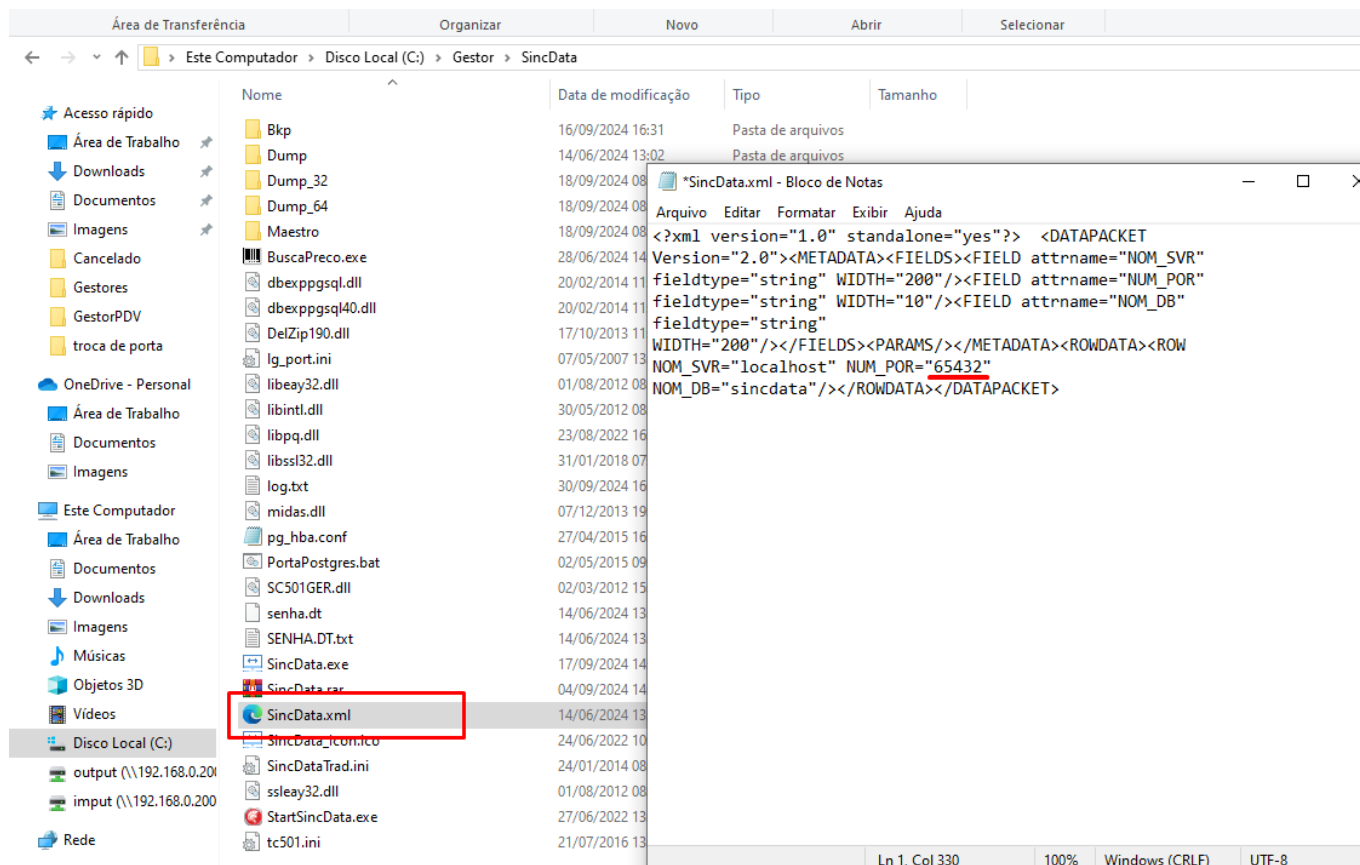
7.GestorPDV

C:\Gestor\GestorPDV\PostgreSQL_PDV_conn.txt



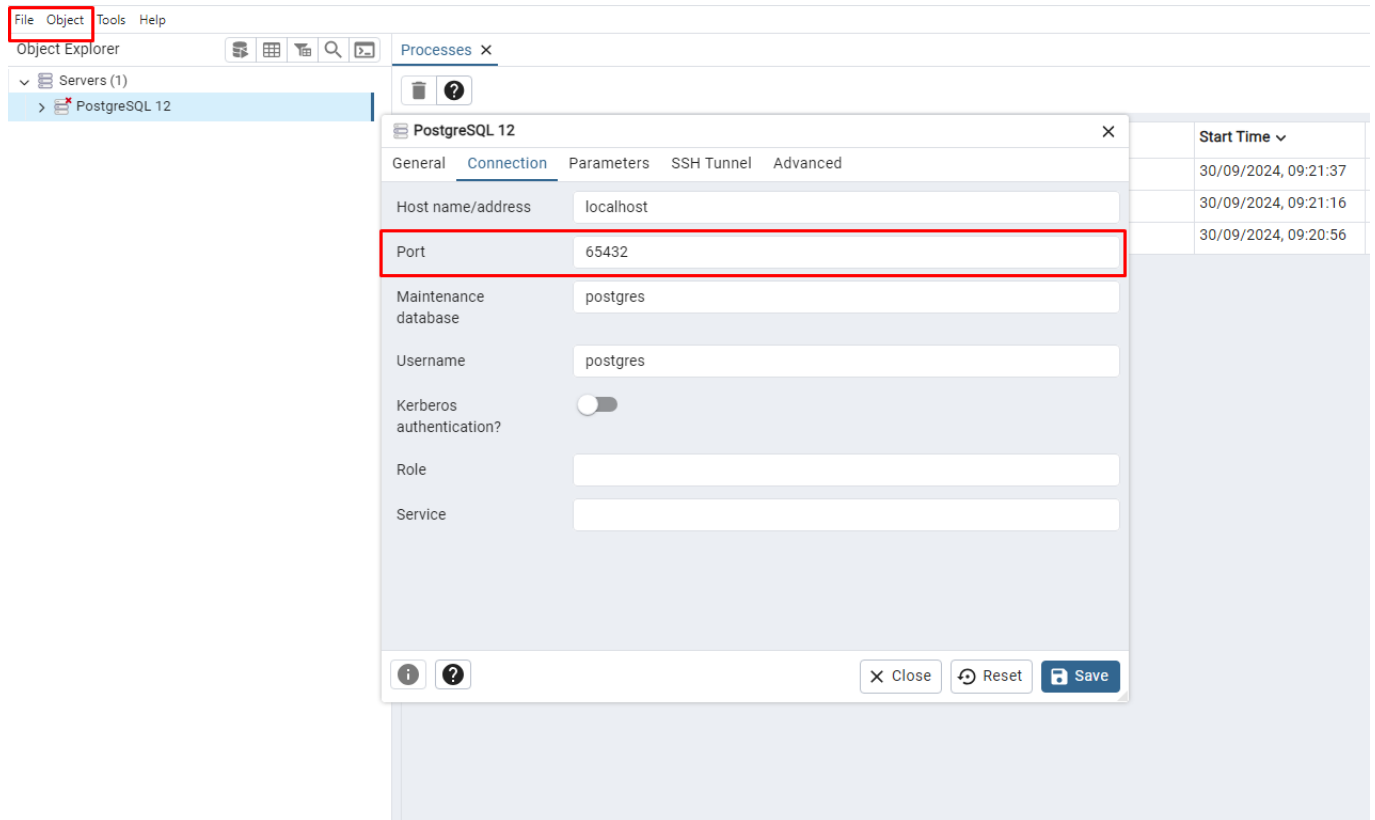
8.SincData

C:\Gestor\GestorPDV\SincData.xml



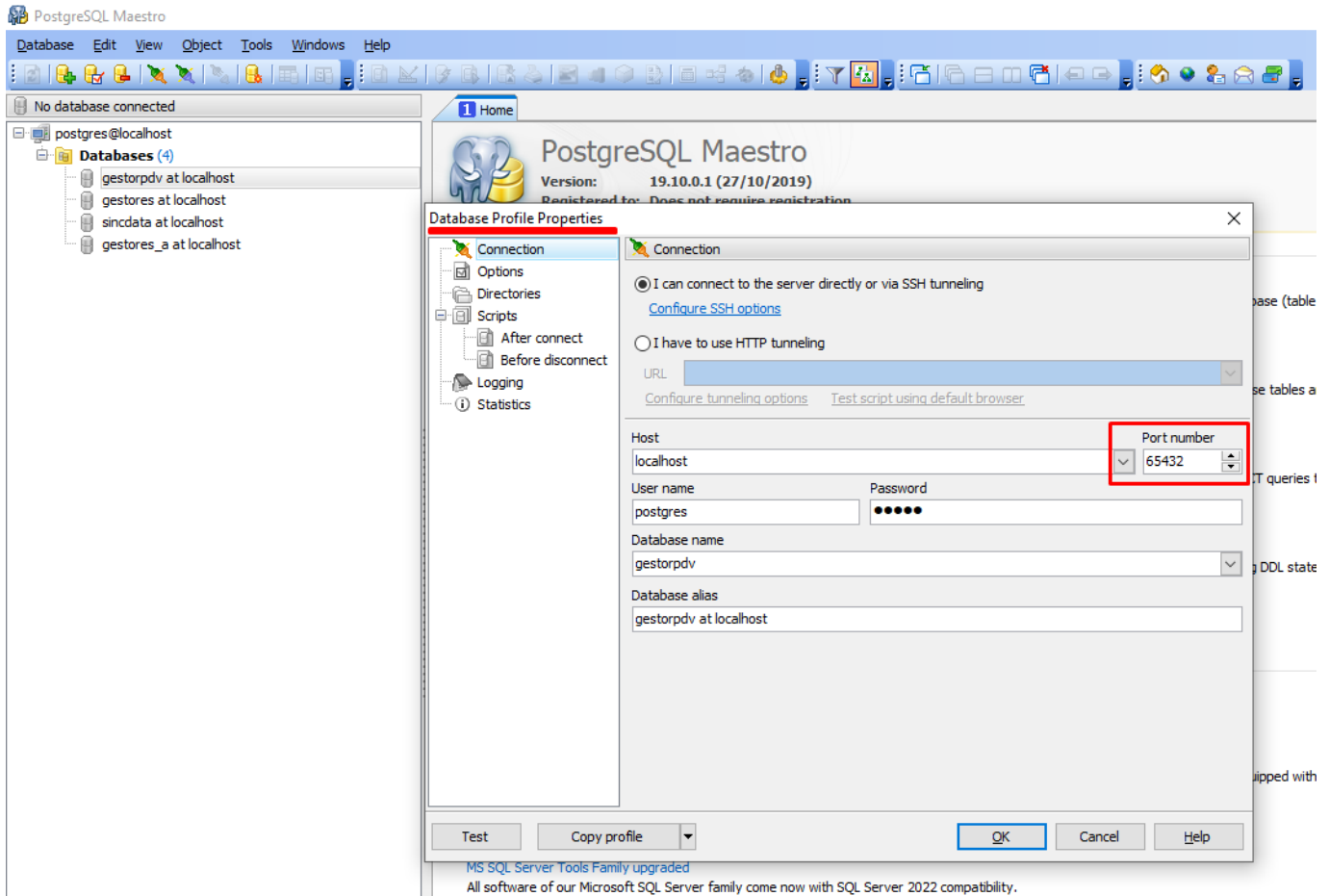
9.PgAdmin

Trocar a porta de conexão do PgAdmin



10.Maestro

Vai em Propriedades e troca a Porta





ID de solução único: #1499

Autor:: MURILO

Última atualização: 02-11-26 20:55