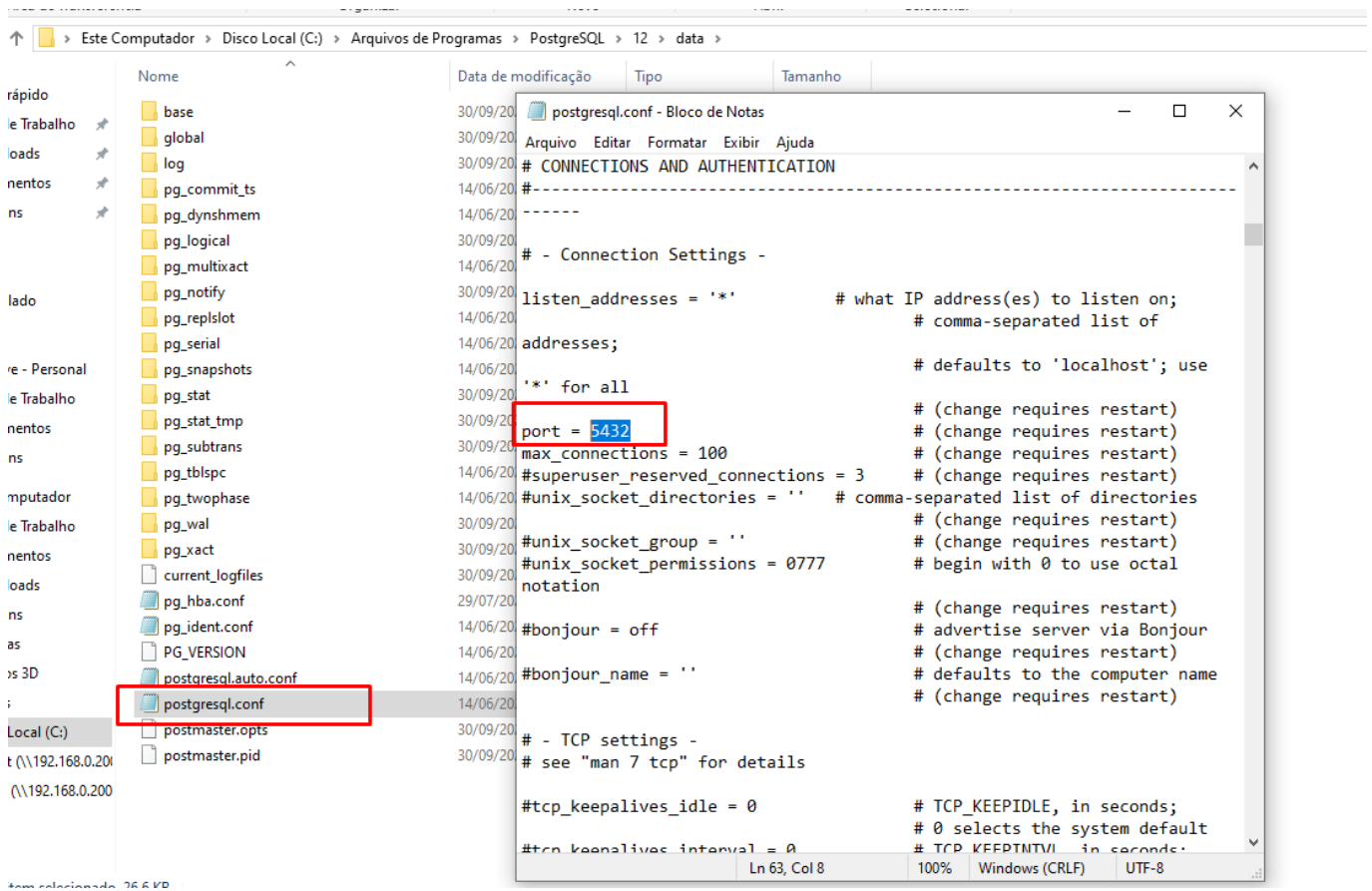


## PSQL - Trocar porta do PostgreSQL

### Trocar porta do postgresQL

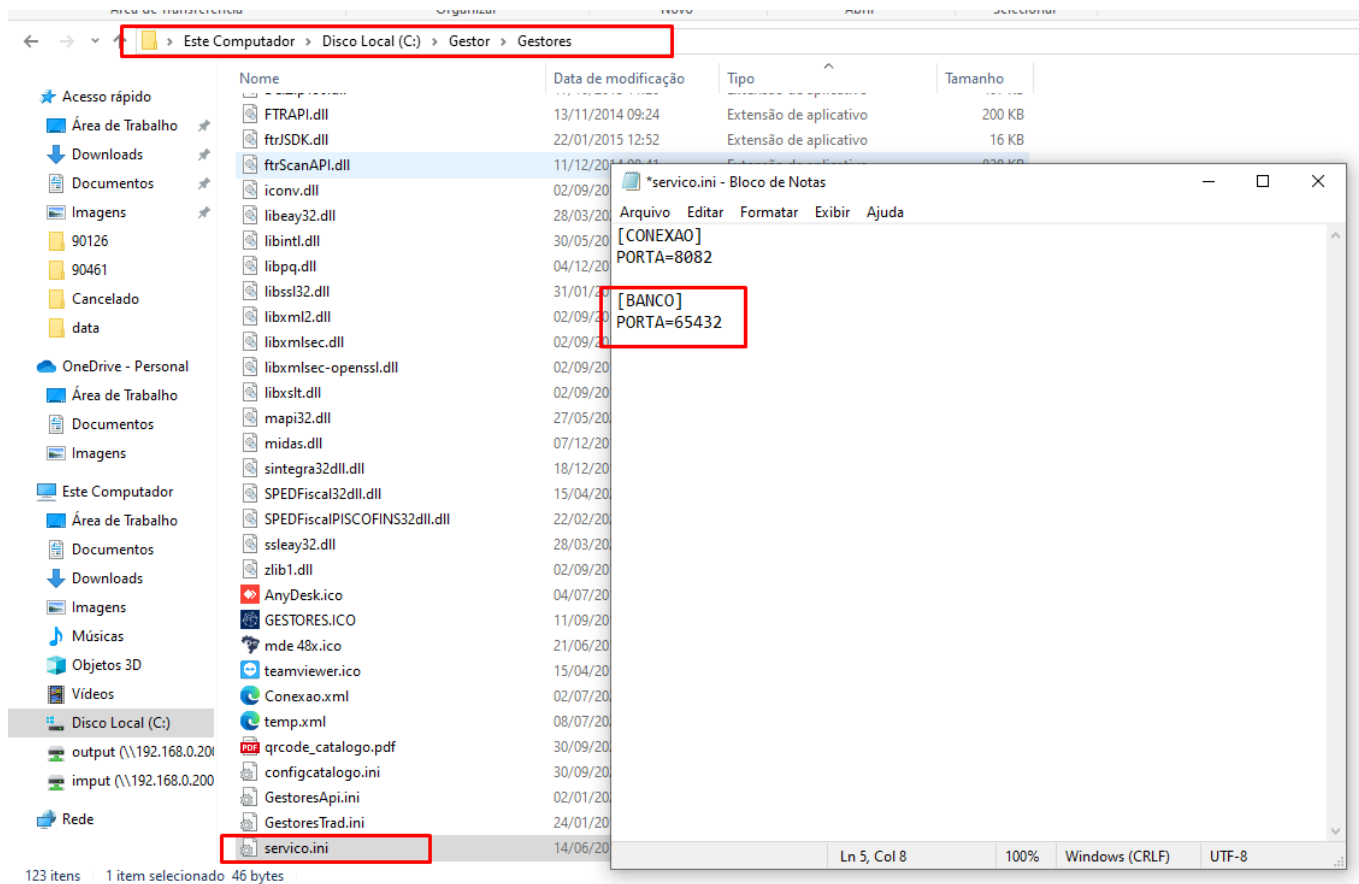
1. Trocar na pasta do PosgreSQL (C:\Arquivos de Programas\postgresql\12\data)

Arquivo postgresql.conf, trocar o campo port =

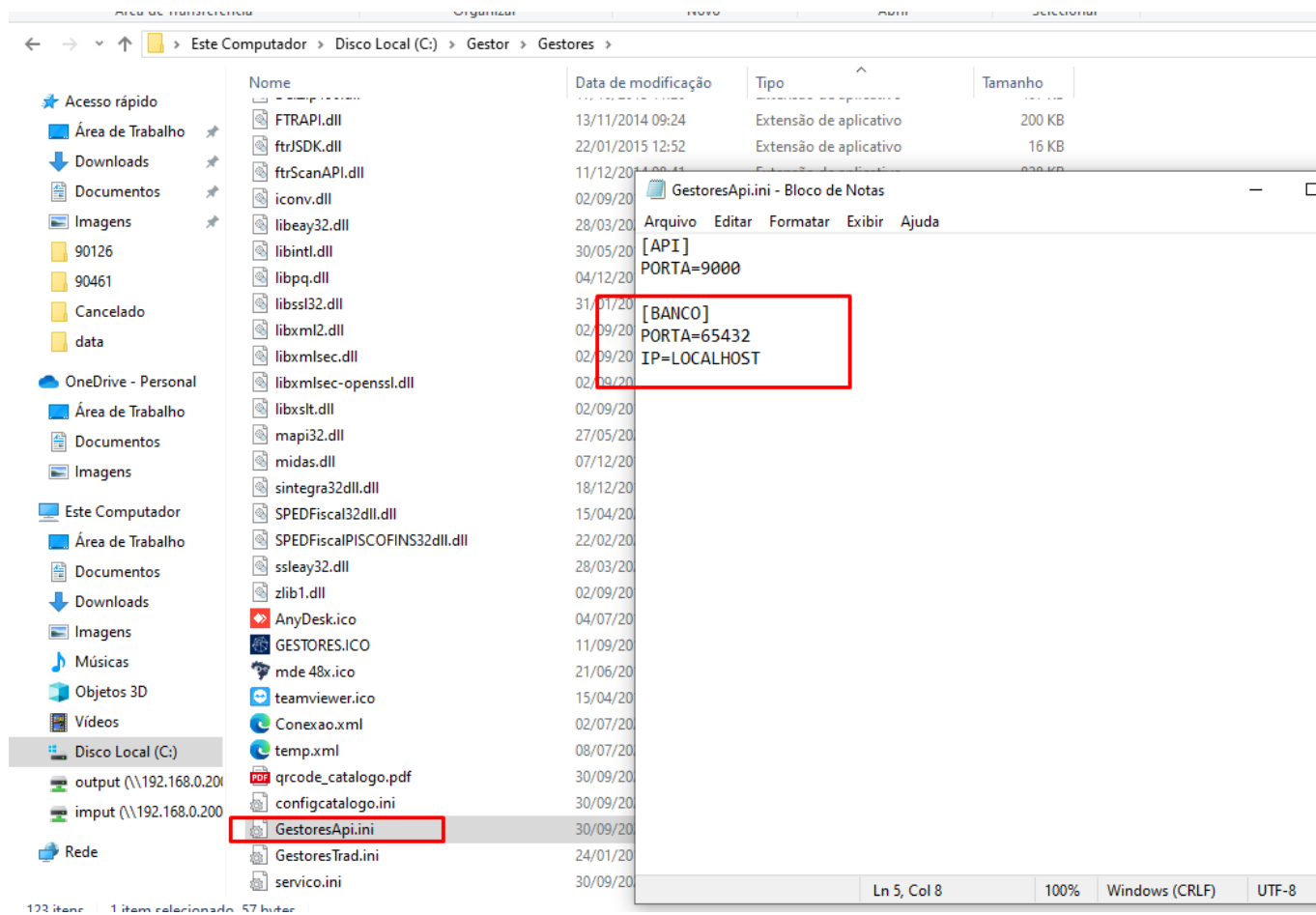


2. Trocar a porta do [BANCO] PORTA =

C:\Gestor\Gestores\serviços.ini

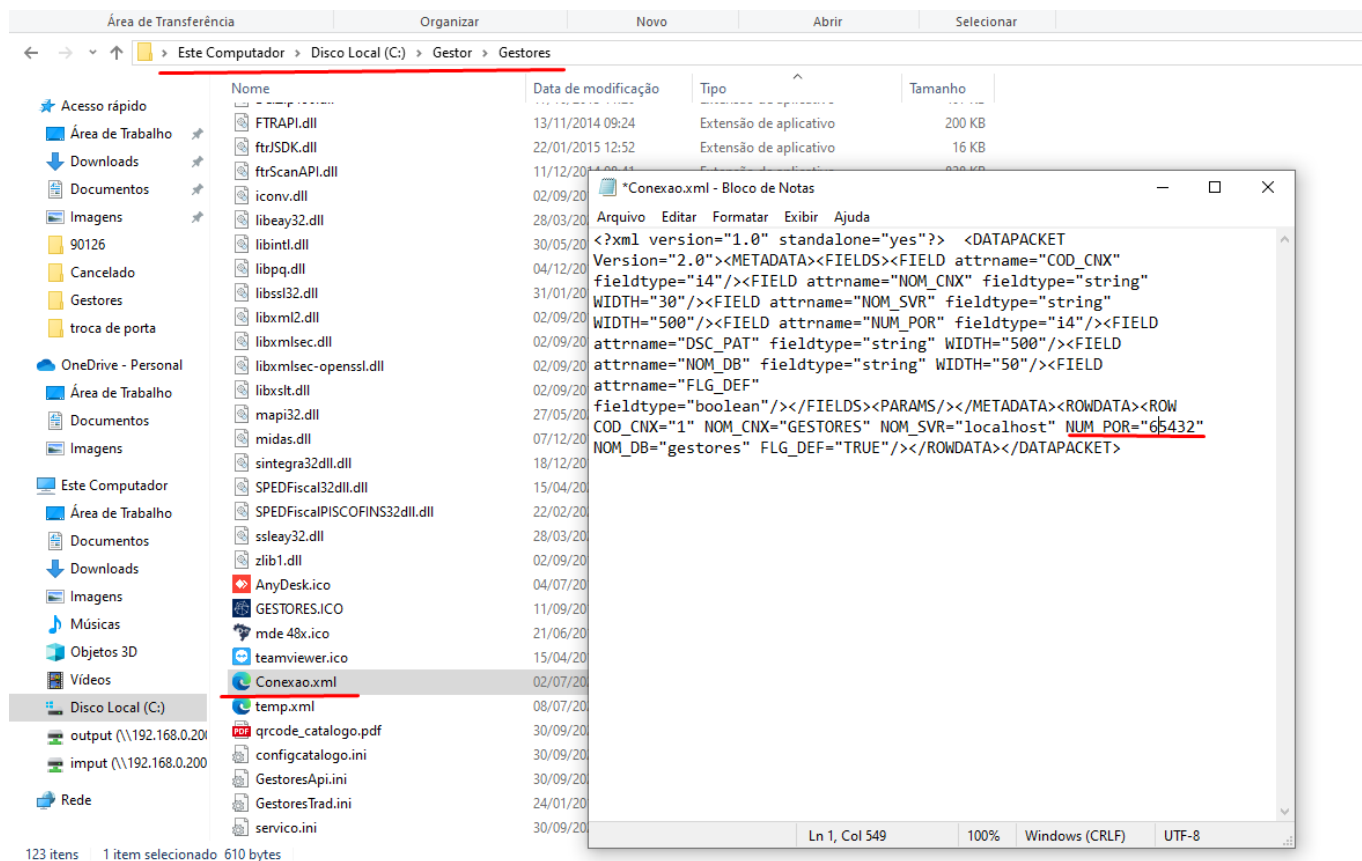


3. Trocar a porta do [BANCO] PORTA =  
C:\Gestor\Gestores\gestoresApi.ini



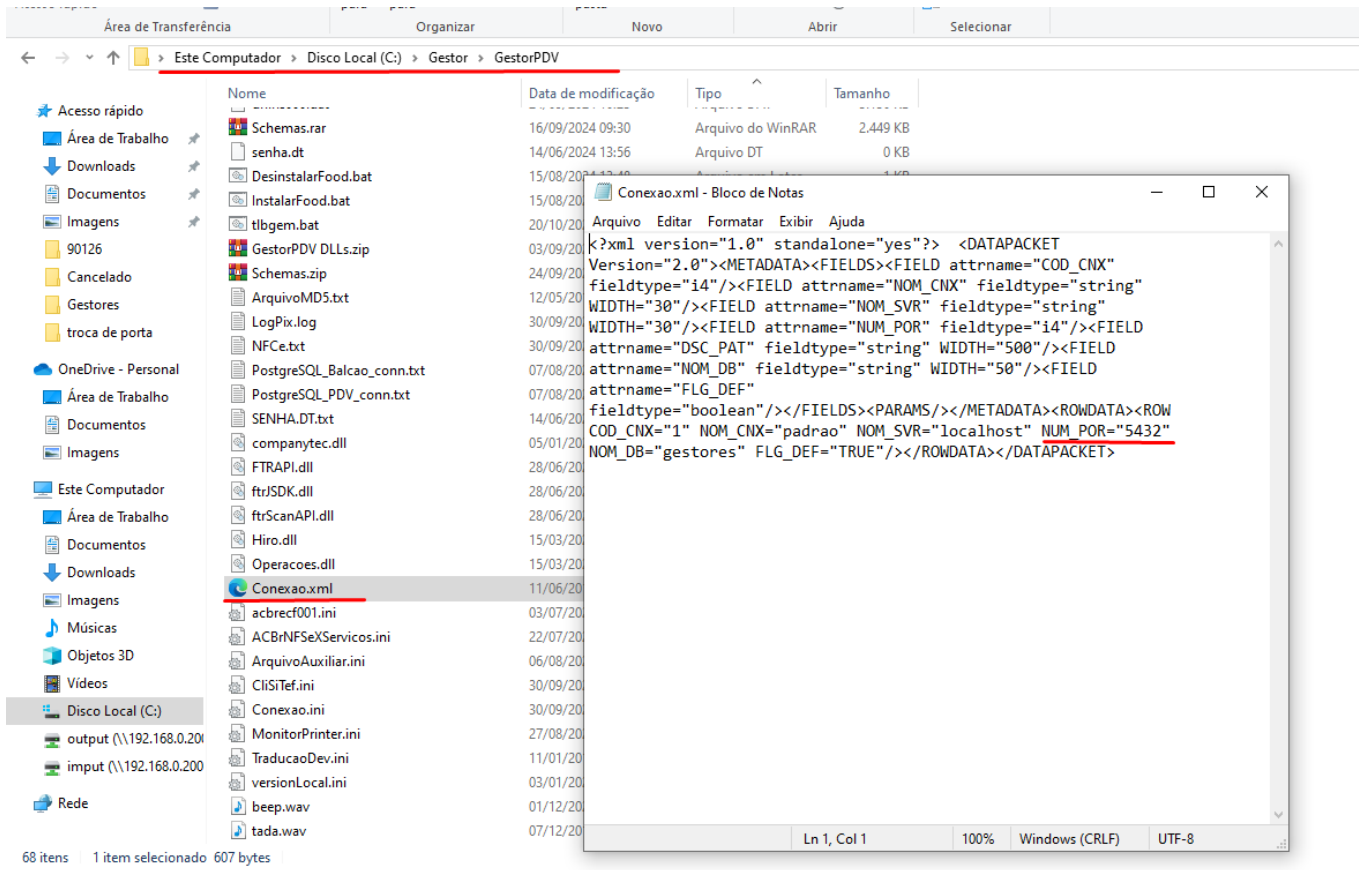
4. Trocar a porta [NUM] POR = " "

`C:\Gestor\Gestores\conexao.xml`



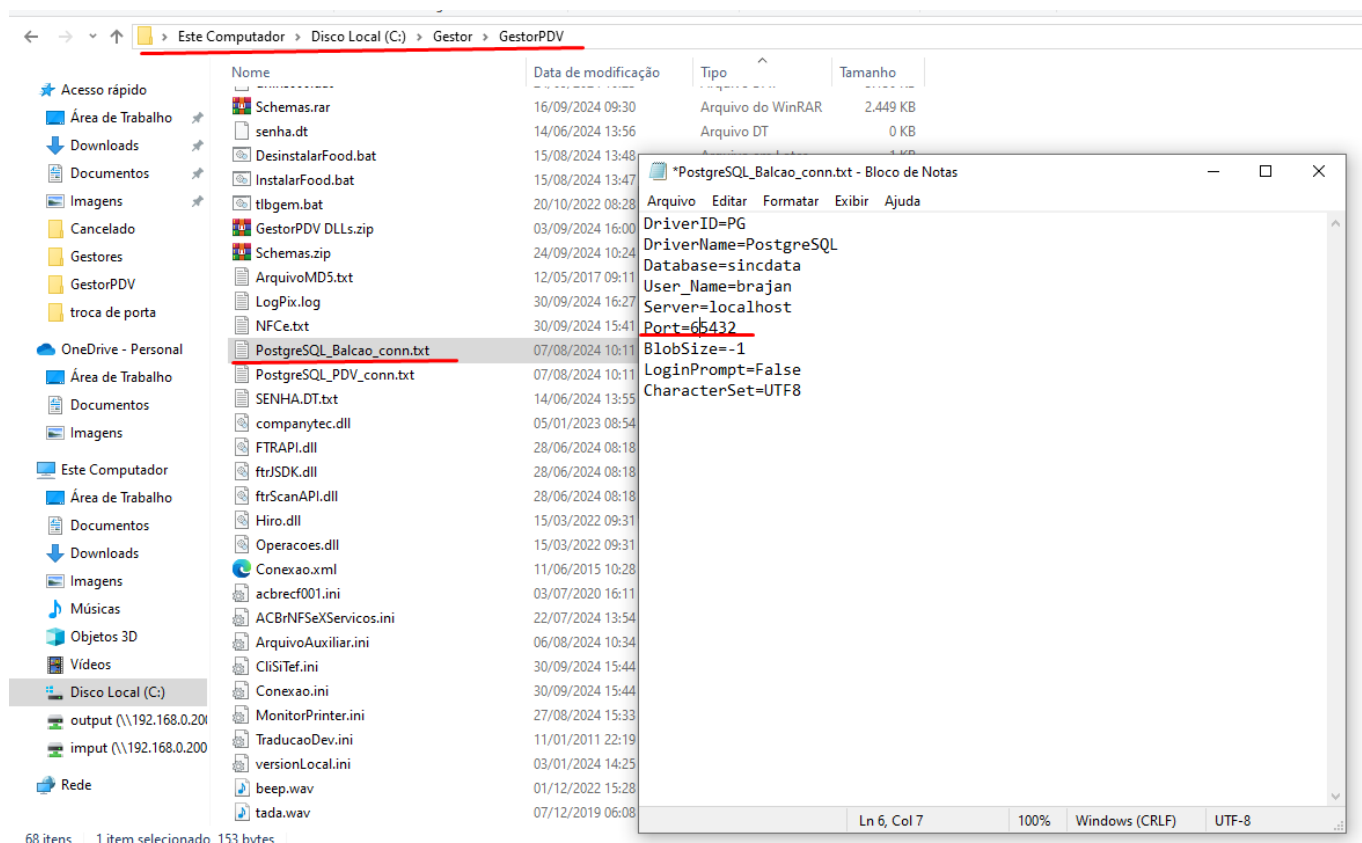
## 5. GestorPDV

C:\Gestor\GestorPDV\conexao.xml



## 6.GestorPDV

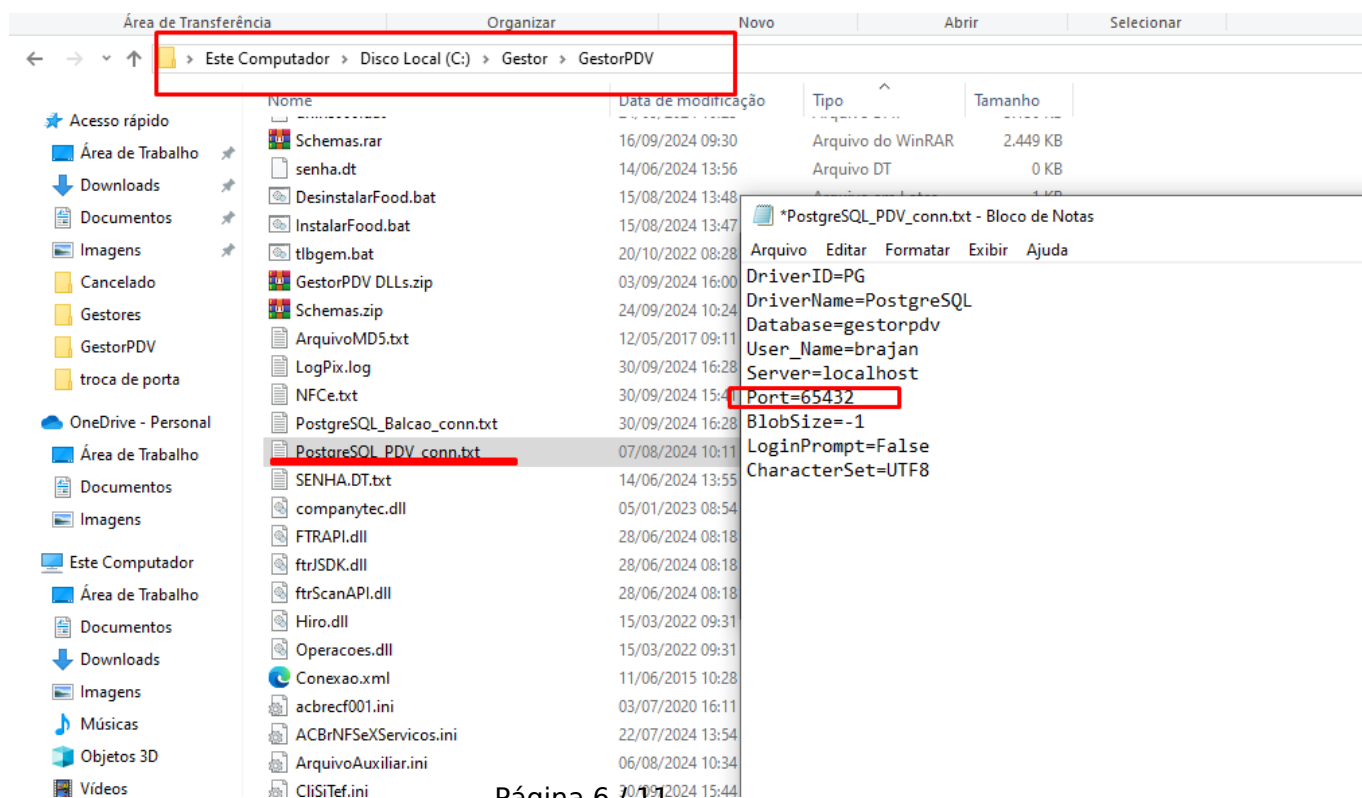
C:\Gestor\GestorPDV\PostgreSQL\_Balcao\_conn.txt



PostgreSQL\_PDV\_conn.txt

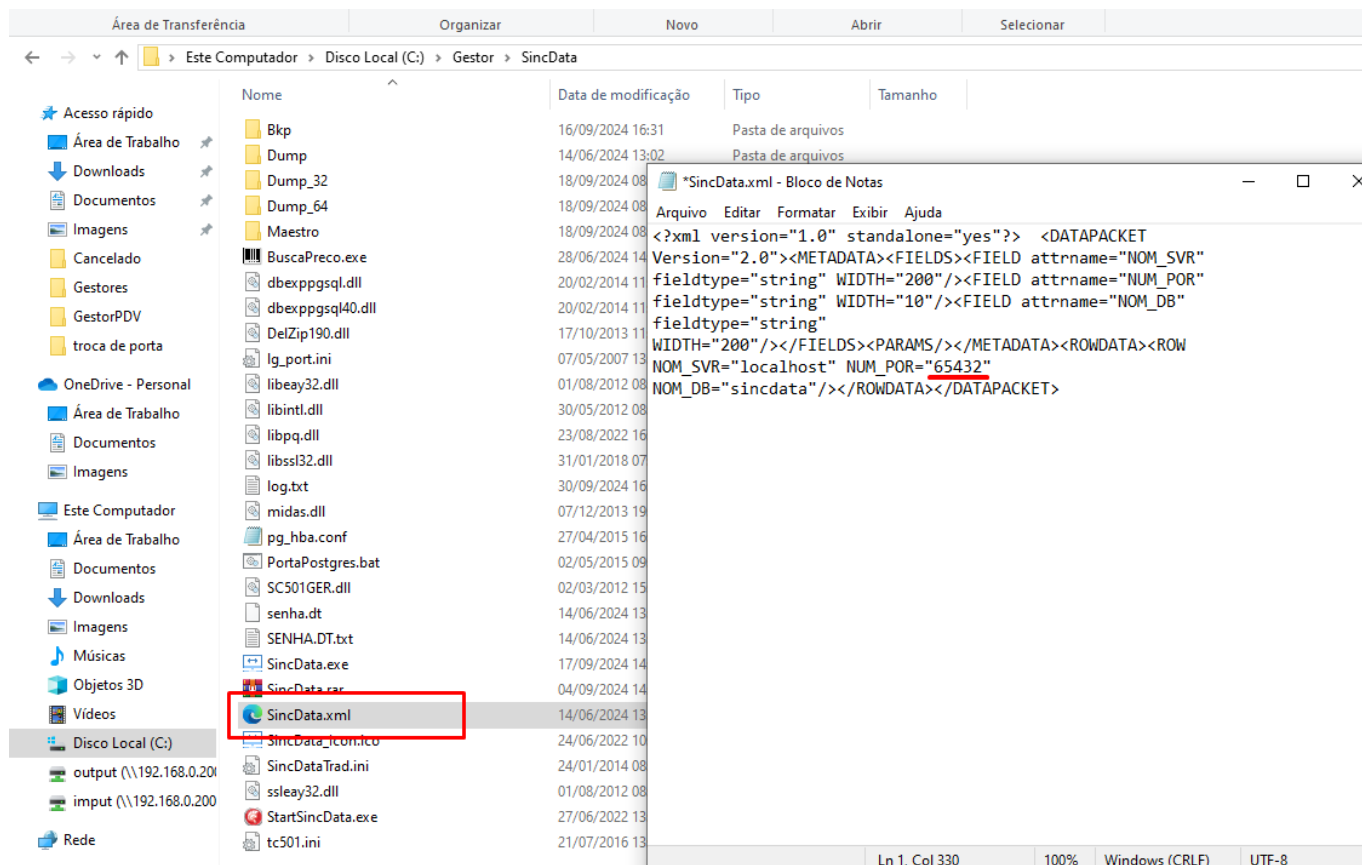
## 7.GestorPDV

C:\Gestor\GestorPDV\PostgreSQL\_PDV\_conn.txt



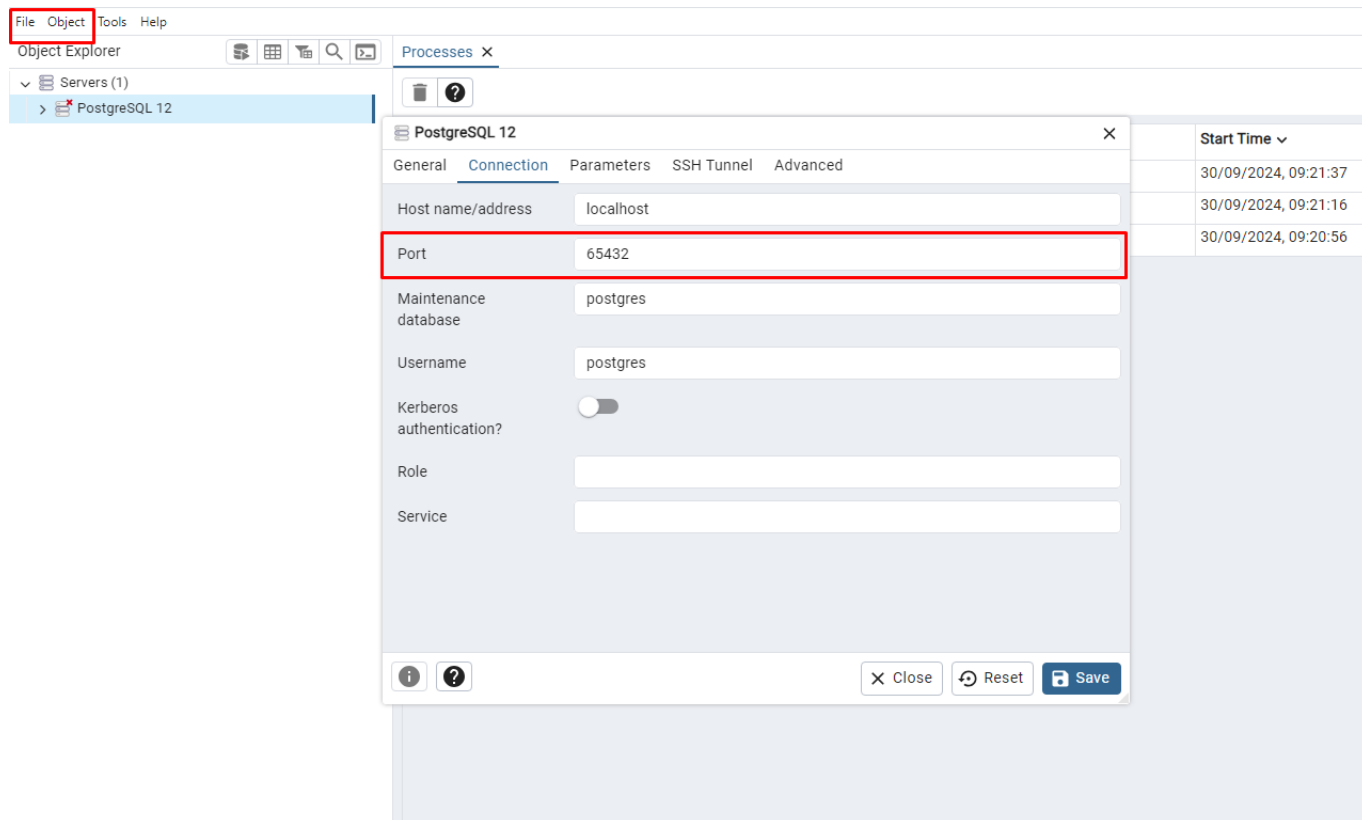
## 8.SincData

C:\Gestor\GestorPDV\SincData.xml



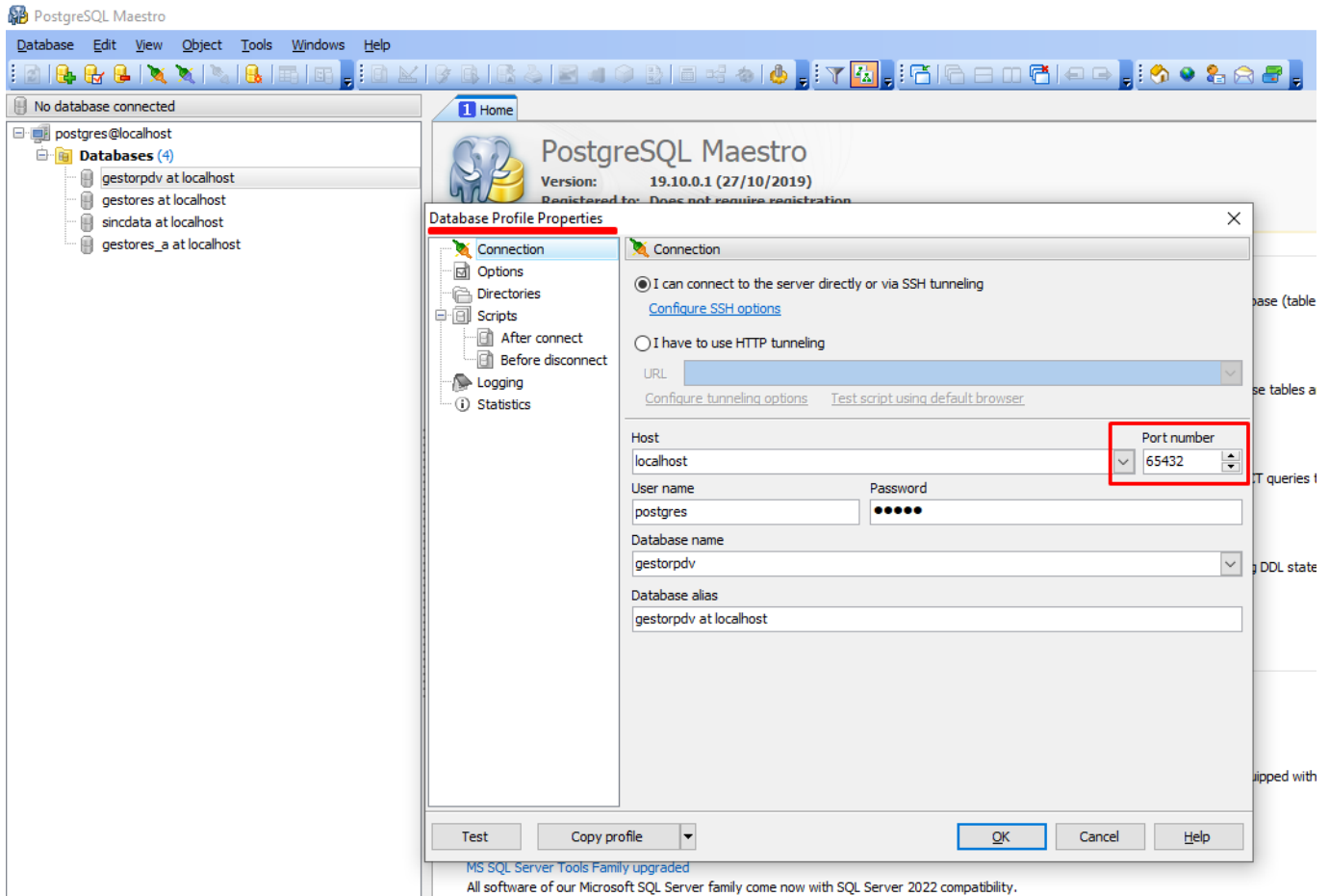
## 9.PgAdmin

Trocar a porta de conexão do PgAdmin



## 10.Maestro

Vai em Propriedades e troca a Porta





ID de solução único: #1499

Autor:: MURILO

Última atualização: 02-11-26 20:55